



# REECE AUSTRALIA LIMITED

ACN 004 313 133

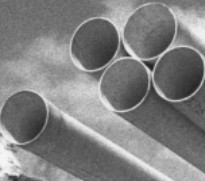
## 1998-1999

### HALF YEARLY REPORT

Shareholder Information



**REECE**



## Half-year highlights

Dear Shareholder

The Board is very pleased to report an increase in sales and earnings for the six months to 31 December 1998 and has declared an interim dividend of 17.5 cents per share. A summary of the financial results is contained in this Report.

The group is increasing its presence in each state in which it operates. At the end of the reporting period the group was operating from 138 outlets nationally.

The group continues to benefit from buoyant building and renovation activity and an increased profile in the markets in which it operates.

The Board is particularly pleased with the groups increased earnings and the contribution from all divisions and states. Further the Board wishes to acknowledge the efforts of Reece management and staff and their continuing contribution to the group's performance.

L. Alan Wilson  
Managing Director



# Summary of Financial Results

## to 31 December 1998

### Profit and loss for six months to 31 December 1998

	1998 \$A'000	1997 \$A'000
Total Revenue	237,817	209,537
Operating profit before tax	18,880	11,406
Less Tax	7,130	4,437
Operating profit after tax	11,750	6,969

### Balance Sheet as at 31 December 1998

	1998 \$A'000	1997 \$A'000
<b>Current Assets</b>		
Cash	23,114	3,885
Receivables	67,551	62,789
Investments	10,034	10,000
Inventories	57,646	51,252
<b>Total Current Assets</b>	<b>158,345</b>	<b>127,926</b>
<b>Non-Current Assets</b>		
Property, plant and equipment	59,754	58,327
Intangibles	1,617	1,555
Other	4,672	4,114
<b>Total Non-Current Assets</b>	<b>66,043</b>	<b>63,996</b>
<b>Total Assets</b>	<b>224,388</b>	<b>191,922</b>
<b>Current Liabilities</b>		
Accounts payable	65,561	52,236
Borrowings	1,427	780
Provisions	15,211	8,758
<b>Total Current Liabilities</b>	<b>82,199</b>	<b>61,774</b>
<b>Non-Current Liabilities</b>		
Provisions	4,045	3,601
<b>Total Non-Current Liabilities</b>	<b>4,045</b>	<b>3,601</b>
<b>Total Liabilities</b>	<b>86,244</b>	<b>65,375</b>
<b>Net Assets</b>	<b>138,144</b>	<b>126,547</b>
<b>Shareholders Equity</b>		
Share capital	9,960	9,960
Reserves	1,336	1,267
Retained profits	126,848	115,320
<b>Total Shareholders' Equity</b>	<b>138,144</b>	<b>126,547</b>



REECE

## **Shareholder Inquiries**

Computershare Registry Services Pty Ltd  
GPO Box 2975EE  
Melbourne 3001  
Telephone 03 9611 5711  
Facsimile 03 9611 5710

---

Reece Australia Limited  
ACN 004 313 133  
Head Office 118 Burwood Highway Burwood Victoria 3125  
Telephone 03 9274 0000 Facsimile 03 9274 0199  
Postal P.O. Private Bag Burwood Victoria 3125