

BALLOFIX A SECURE CONNECTION



BROEN

BALLOFIX

A World Class Performer

The BALLOFIX Ball Valve is a secure and easy way for isolating the flow of liquids in domestic and commercial applications.

Over 100 million BALLOFIX Ball Valves have been installed since its introduction in 1960. And the reasons are clear - design, quality production and precision performance. All the result of advanced technological know-how and a commitment to continuous improvement.

With its unique removable vandal resistant handle and an internal stop built into the valve, the BALLOFIX Ball Valve is easy to use, tamper proof as well as safe and reliable. It ensures minimal interruption when maintenance works need to be performed requiring the isolation of liquids.

- > 100% leak tested
- > watermark approved
- > maximum inlet pressure 1600kPa
- > price competitive
- > chrome plated internally and externally
- > easy to clean
- > aesthetically superior
- > suitable for multiple applications
- > large range of sizes and designs
- > 5 year replacement warranty

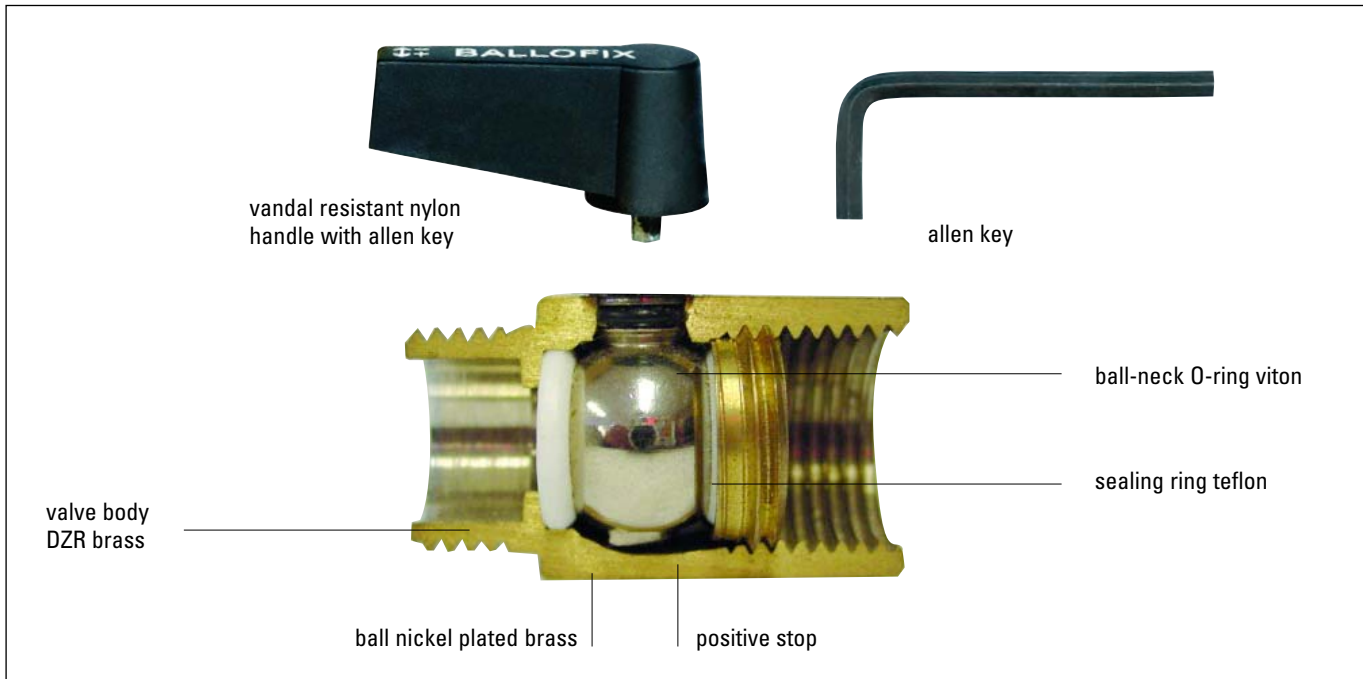
Applications

BALLOFIX Ball Valves are ideal for a wide range of domestic and commercial plumbing applications:

- where quality installations are required
- multiple installations with restricted access
- public toilets
- pressurised air lines
- general industry and maintenance
- automotive applications
- air conditioning and mechanical services
- isolation of plumbing fixtures like tempering valves, dishwashers, hand basins, urinals and toilets

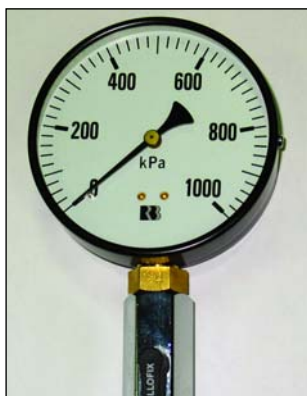


THE PRODUCT



Substances Compatibility

<i>liquid/gas</i>	<i>temperature (c°)</i>
Potable water	to 120°
Steam	to 120°
Clean air	to 90°
Carbon dioxide	to 20°
Ethanol	to 80°



Features and Benefits

Ball is mounted between Teflon sealing rings

Provides complete tightness and smooth operation.

Ball and neck are manufactured in one piece

Additional strength and durability in operation.

A slot is machined in the top of the ball neck

Easy to determine if the valve is open or closed.

Incorporated internal stop in the valve body

Provide a fixed 90° turn of the ball from fully closed to fully open position.

Operated by removable handle

Difficult for unauthorised persons to adjust setting of the valve.

DZR Brass Body

All valves are supplied in DZR brass material making them suitable for drinking water.

The Products

catalogue no.	description	A	B	C*	D*	
52.657.00-20100	3/8" m/f	3/8"	3/8"	46.0		
53.657.00-20100	1/2" m/f	1/2"	1/2"	55.0		
54.657.00-20100	3/4" m/f	3/4"	3/4"	58.0		
55.657.00-20100	1" m/f	1"	1"	67.0		
52.658.00-20100	3/8" f/f	3/8"	3/8"	45.0		
53.658.00-20100	1/2" f/f	1/2"	1/2"	58.0		
54.658.00-20100	3/4" f/f	3/4"	3/4"	62.5		
55.658.00-20100	1" f/f	1"	1"	67.0		
53.211.00-20100	3/4" x 1/2" m/f	3/4"	1/2"	55.5		
52.389.00-20130	3/8" x 1/2" m/f non return valve	3/8"	1/2"	42.3	46.5	
52.390.00-20130	1/2" x 1/2" m/f non return valve	1/2"	1/2"	42.3	46.5	
52.077.00-20120	3/4" x 1/2" m/m	3/4"	1/2"	61.0	63.0	
52.392.00-20100	3/8" x 1/2" m/f	3/8"	1/2"	42.3	30.0	
52.393.00-20100	1/2" x 1/2" m/f	1/2"	1/2"	42.3	30.0	



Australian Standard
AS 3496 W 679
AS 4020 Test. no. 0112428

To find out more about the BALLOFIX Ball Valves talk to your local **Reece Plumbing Centre** manager or visit www.reece.com.au.

BROEN

www.broen.com.au

reece
Plumbing Centres

BROEN offers a 5 year replacement warranty on the original BALLOFIX. BALLOFIX Ball valves only available at Reece Plumbing Centres.
*All dimensions are in mm - unless otherwise stated.